

WORKING TOGETHER TO MAKE FARMING SAFER

Children's Farm Safety Booklet



SLOW
we live here

4-7
YEARS

**PARTNERIAETH
DIOGELWCH AR
FFERMYDD CYMRU**
//
**WALES
FARM SAFETY
PARTNERSHIP**



Ariennir gan
Lywodraeth Cymru
Funded by
Welsh Government

Welcome to the Wales Farm Safety Partnership booklet

Farms are such wonderful places to visit and grow up. We can learn about science, animals, where food comes from and so much more. But it's important to remember that a farm is also a workplace and can be dangerous. This booklet is a guide to help you **be farm safe, and stay farm safe.**

This WFSP booklet belongs to:



i Note for parents

The Wales Farm Safety Partnership is a collaboration of key agricultural stakeholder organisations in Wales. With your help and by working together, we can reduce the risks, and change behaviours. We can, and must, save lives and livelihoods on Welsh farms.

This booklet has been developed to create more conversations on farm and countryside safety in our homes and communities.

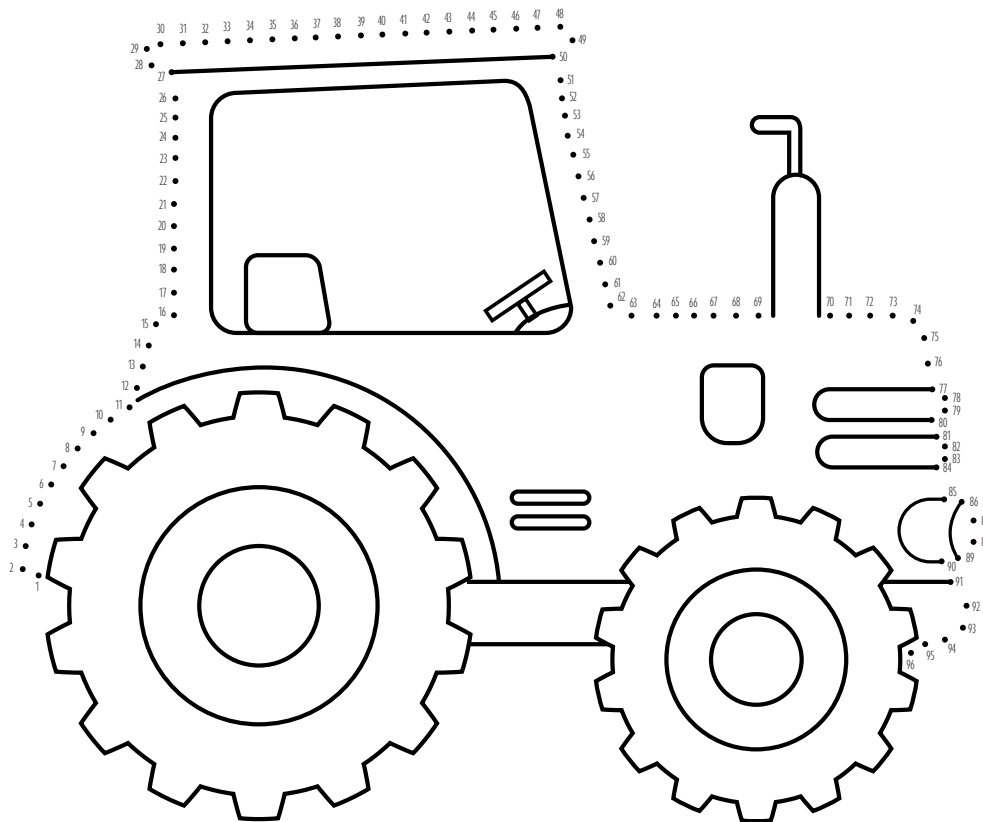
Please read and discuss with your children.

**PARTNERIAETH
DIOGELWCH AR
FFERMYDD CYMRU**
////////////////////
**WALES
FARM SAFETY
PARTNERSHIP**

Join the dots and colour in the tractor

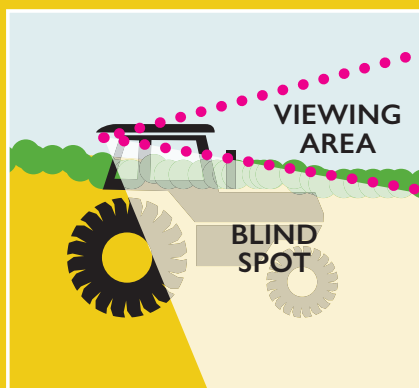
Blind spots – Remember, you can't always be seen!

Use your favorite colours to colour in the tractor. Can you also find the blind spots?



Never stand near a moving tractor!

Visibility can be limited for farmers when sitting high up in the tractors, combine harvesters, etc, and they will not see you if you approach.



Look at the picture above and note where the blind spots are located.

Word Search



I	C	T	R	A	C	T	O	R	M
O	S	M	I	Q	X	R	U	D	O
H	C	A	R	I	E	Q	I	A	W
E	O	W	B	G	H	U	N	K	E
L	Y	F	G	P	O	A	D	C	R
M	O	I	P	N	L	D	O	Y	F
E	D	D	J	E	E	P	L	O	P
T	L	O	P	N	F	Y	K	H	O
S	A	F	E	T	Y	B	E	L	T
Y	O	H	P	L	O	U	G	H	F

Farm Safety – Words may run forwards, backwards, diagonally, up or down and some may overlap.

Helmet

Quad

Tractor

Safety Belt

Car

Plough

Digger

Mower

Jeep

Fill in the gaps

Can you fill in the gaps to complete the words?



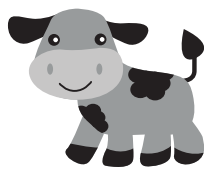
Tr_ct_r



Sh__P



T_ail_r



C_w



D_g

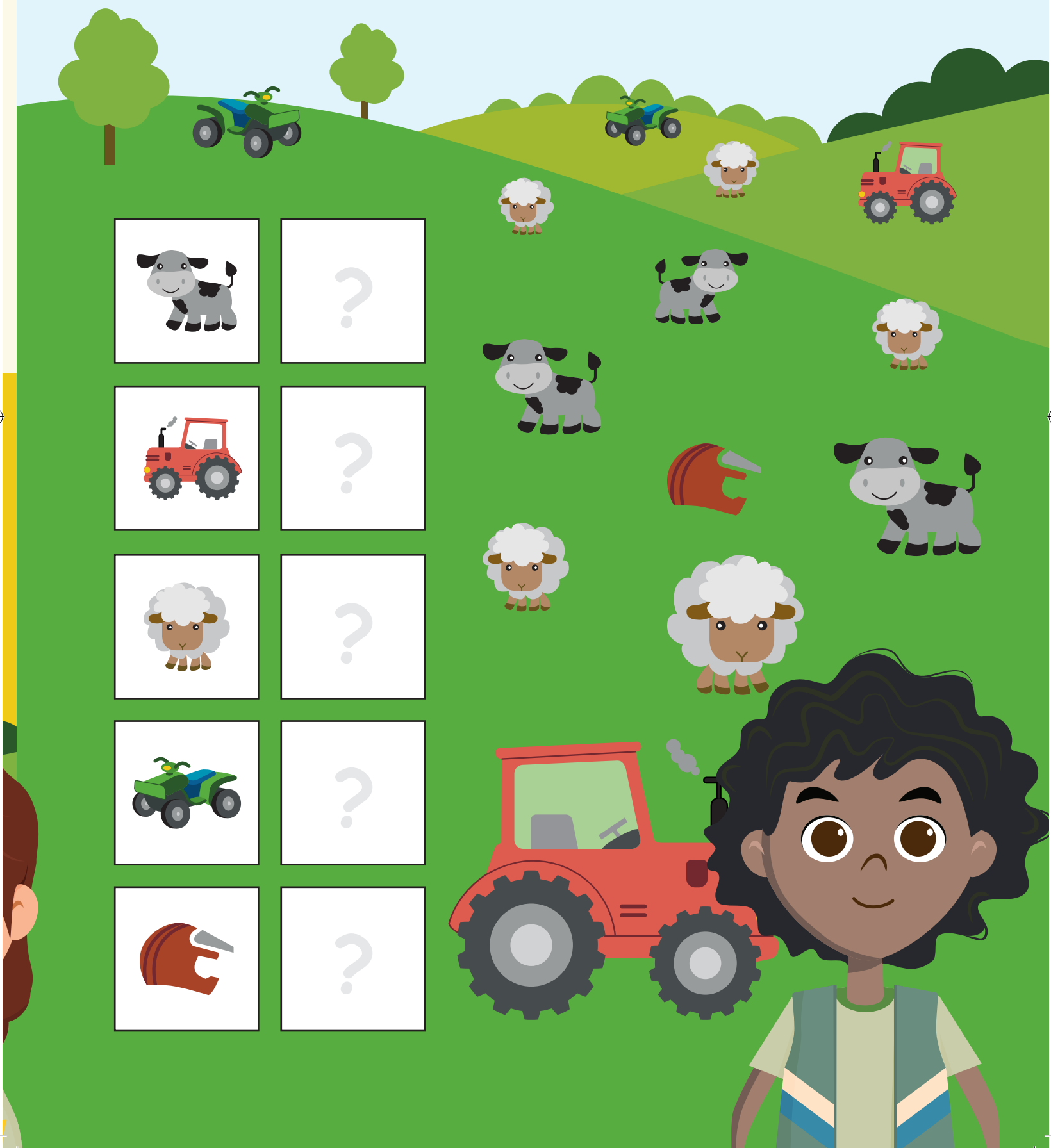






Qu_d



Counting game 123...

How many cows, tractors, sheep, quad bikes and helmets can you find?



	?
	?
	?
	?
	?



Dangers on the farmyard

Can you find **7 dangers** on the farmyard?



Never enter a
farmyard alone.

Listen to adults
when on the farm.

1. It's important for everyone to wear a HELMET on a quad bike.
2. CLOSE the gates - the angry bull could escape.
3. DON'T climb ladders - you could fall.



4. **NEVER** climb on a roof - you could fall and hurt yourself.
5. Slurry pits are dangerous and should be covered over or fenced off - **KEEP AWAY.**

6. It's **DANGEROUS** to travel on the back of a trailer - you could fall off.
7. **DON'T** walk or stand in front of a moving tractor.

The Countryside Code

Your guide to enjoying parks and waterways, coast and countryside.



Respect everyone

- be considerate to those living in, working in and enjoying the countryside
- leave gates and property as you find them
- do not block access to gateways or driveways when parking
- be nice, say hello, share the space
- follow local signs and keep to marked paths unless wider access is available

Protect the environment

- take your litter home – leave no trace of your visit
- do not light fires and only have BBQs where signs say you can
- always keep dogs under control and in sight
- dog poo – bag it and bin it in any public waste bin or take it home
- care for nature – do not cause damage or disturbance

Enjoy the outdoors

- check your route and local conditions
- plan your adventure – know what to expect and what you can do
- enjoy your visit, have fun, make a memory

Stay safe on your farm

For more comprehensive advice on farm health and safety, visit:

Wales Farm Safety Partnership

 @farmsafetywales

 Farm Safety Wales

<https://businesswales.gov.wales/farmingconnect/business/health-and-safety>

Farm Safety Foundation www.yellowwellies.org

Health and Safety Executive www.hse.gov.uk/agriculture



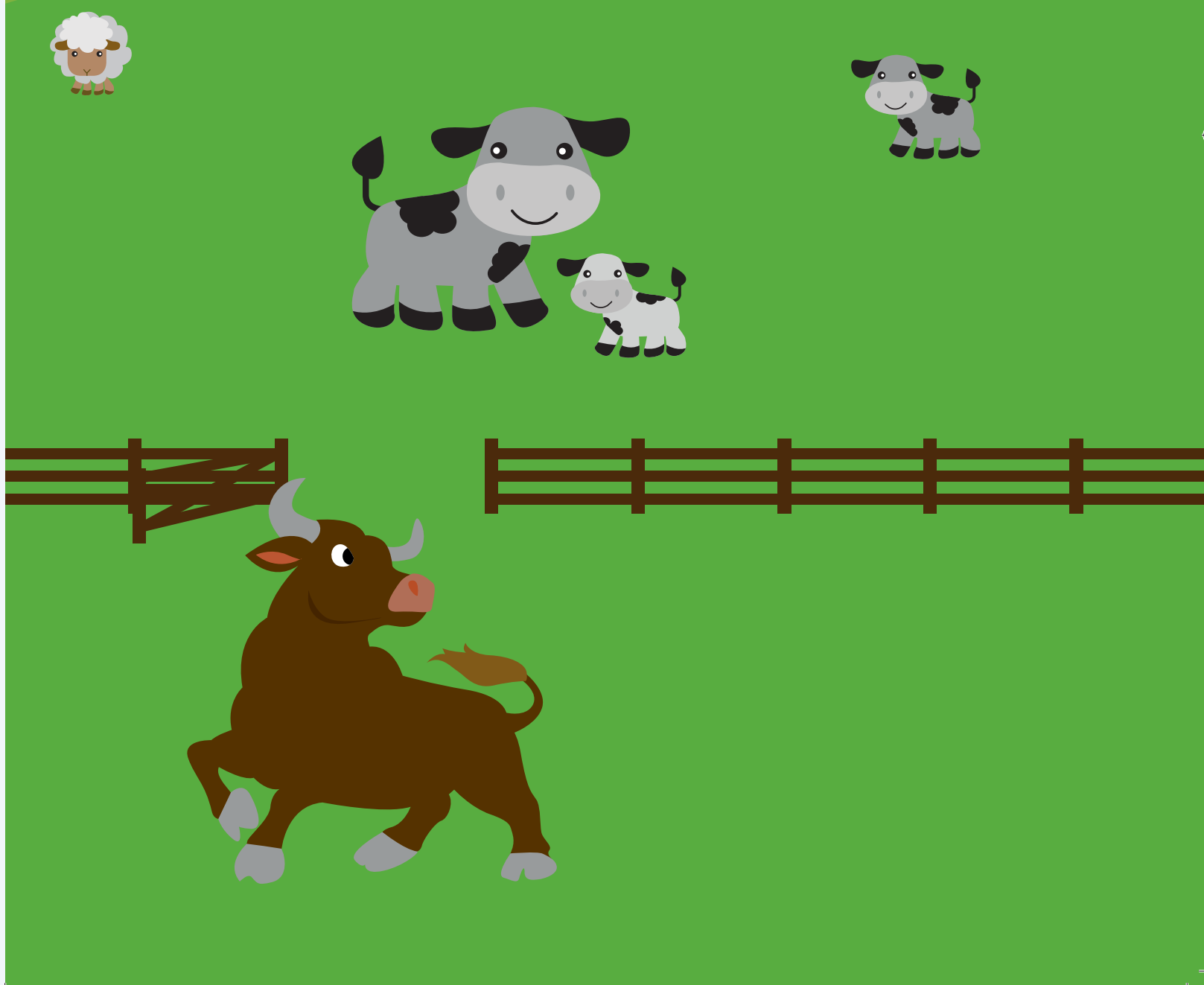
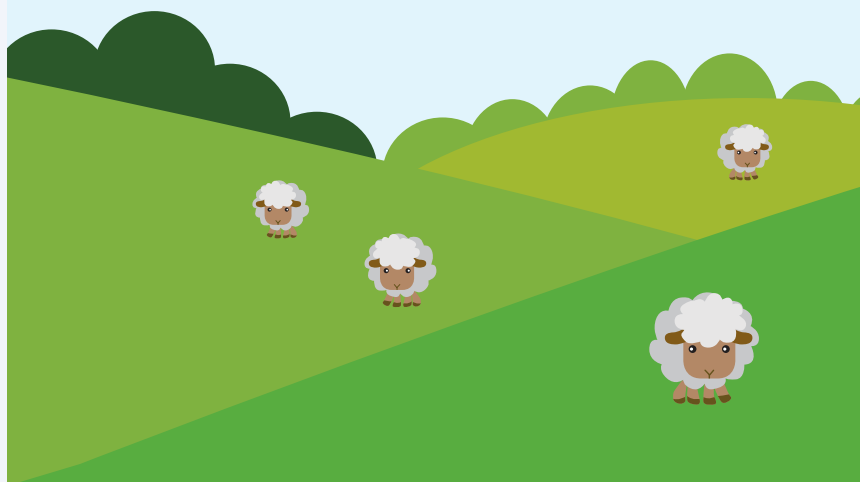
NEVER enter a field without an adult.

NEVER enter a field with cows and young calves or a bull.

ALWAYS close the gate.

ALWAYS wear a helmet on a push bike.

WATCH OUT for farm traffic on roads.





How **safe** is your farm?



Ask yourself

- Do you keep children out of the farm workplace unless fully supervised by an adult who is not engaged in any work activity?
- Do you have a safe and secure play area for young children?
Do they use it?
- Do you know where your young children are playing at all times?
Can you see them?
- Can you ensure your children are fully supervised at all times when around the farm?
- If something were to happen while you were busy working, would you know?
- Do you make your children wear high-vis when around the farm?
- Do you prevent children from playing in, or around, the yard and livestock?
- Do you prevent all children under 13 years from riding on tractors and farm machinery?
- Do you stop children under 16 from using the quad bike/ATV?
Do you lead by example, and wear a helmet?
- Do you secure all heavy wheels, gates, heavy equipment and stacked materials to prevent them from toppling over?
- Are dangerous areas (such as slurry lagoons) securely fenced to prevent children from gaining access, and do you make sure tank covers are always in place?
- Do you make sure everyone washes their hands before and after visiting the yard?

